



MASHUPS

INTEGRATION OF QLIKSENSE IN APEX

AUTHOR: MORITZ SCHENKEL

www.syntegris.de

whoami



QlikSense – What's that?!

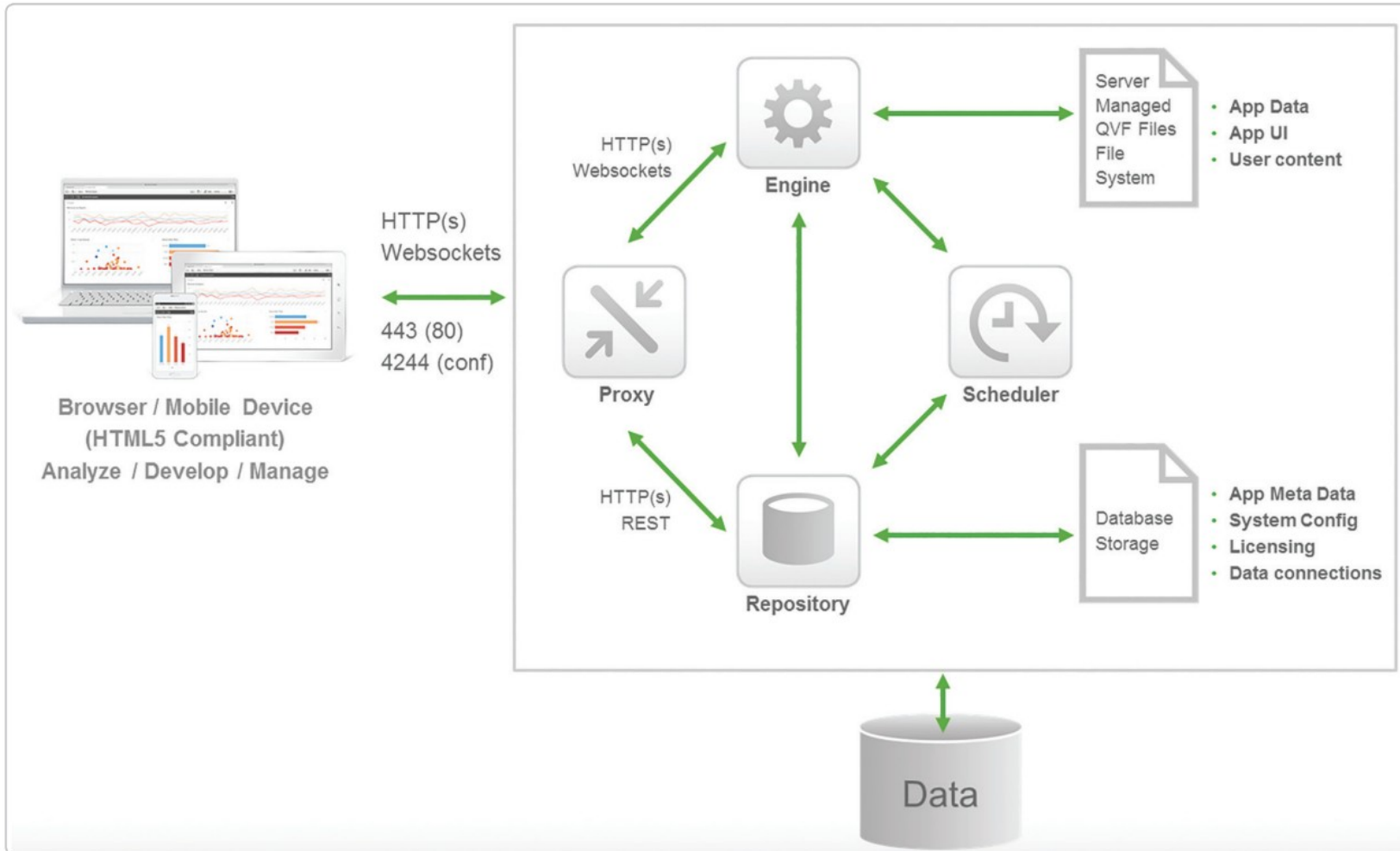
- Data-Visualization Tool for
 - Intuitive Self Service Data Discovery
 - Data Storytelling
 - Dashboards
- connectors for integration of different data sources
- Associative data model
- Power of grey (green, white, grey)



QlikSense Demo Application



QlikSense – Infrastructure



Mashups – What's that?!

Wikipedia:

“A mashup, in web development, is a web page, or web application, that uses content from more than one source to create a single new service displayed in a single graphical interface.”

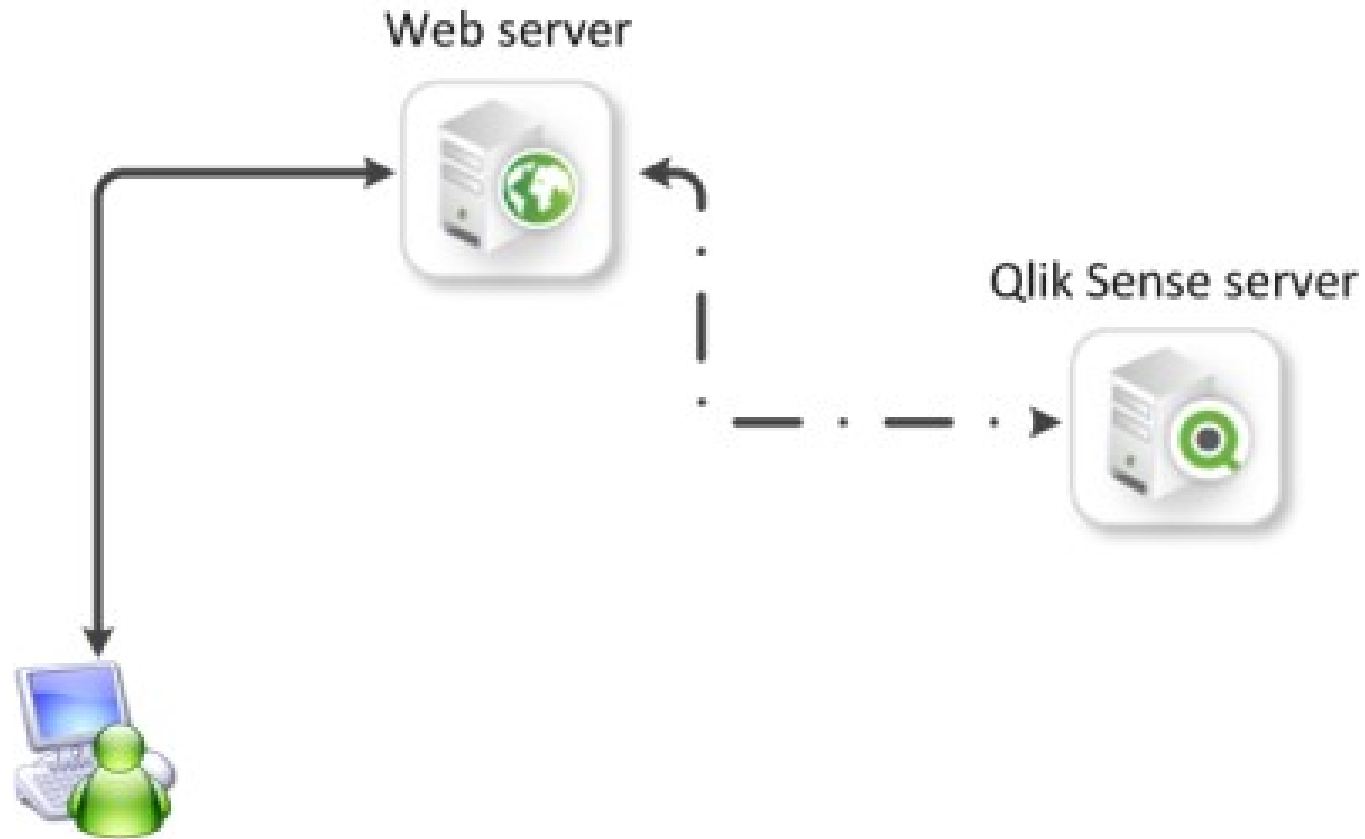


Mashups – What's that?!

- JS APIs for web apps



Mashups – How to implement

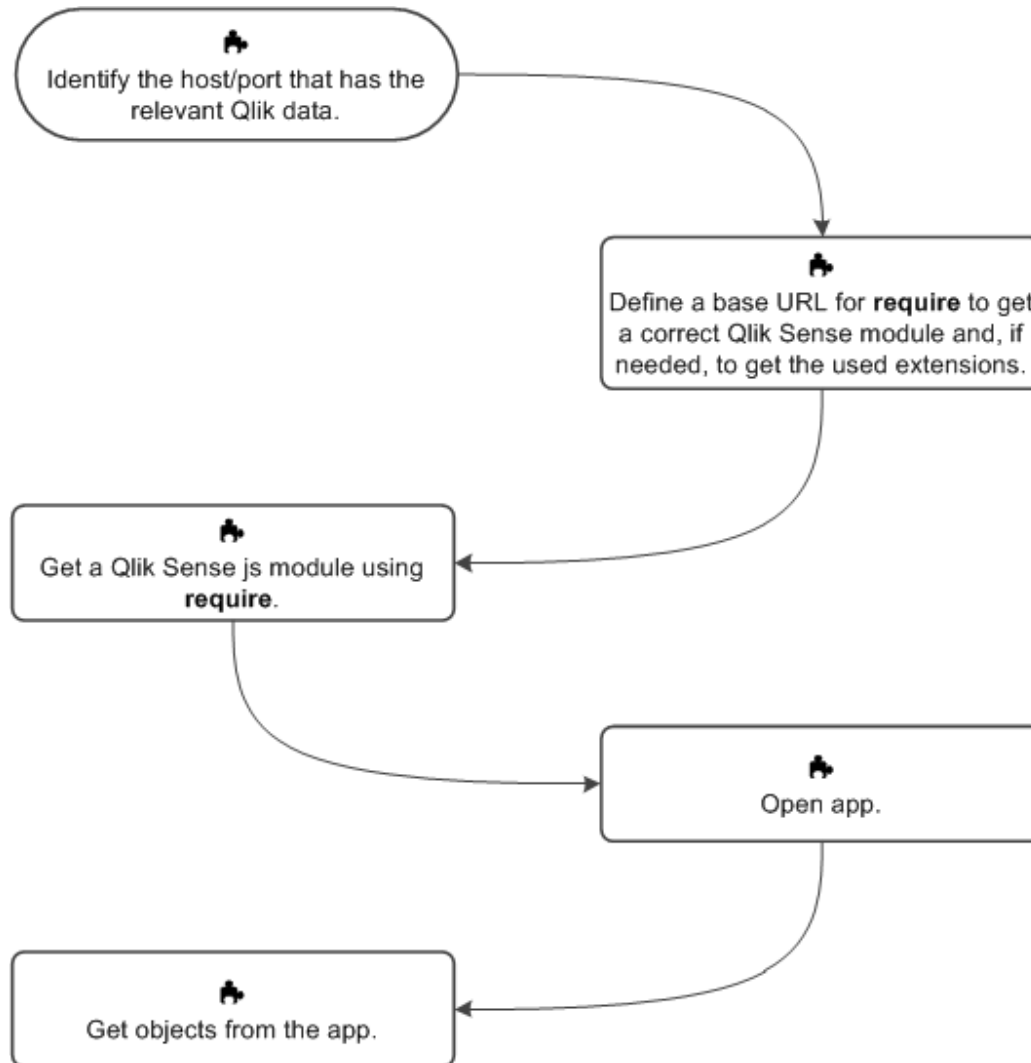


Mashups – How to implement

- Requirements:
 - host/port data
 - .js / .css implemented
 - QlikSense App-ID
 - QlikSense Object-ID
 - Optional: JS for interaction



Mashups – How to implement



QlikSense Integration Demo



Frequent Problems

- QlikSense Desktop – Possible?
- CORS Problems
- Authorization?
- Require.js



Thank You!

SYNTEGRIS INFORMATION SOLUTIONS GMBH
HERMANNSTRASSE 54-56
63263 NEU-ISENBURG

FON (06102) 29 86 68
FAX (06102) 55 88 06
INFO@SYNTEGRIS.DE
SYNTEGRIS.DE