

# dbi services

## Your Middleware Consultant



Gérard Wisson

Senior Consultant

Mobile +41 79 819 25 98

[gerard.wisson@dbi-services.com](mailto:gerard.wisson@dbi-services.com)

[www.dbi-services.com](http://www.dbi-services.com)

---

### Agenda

- i. What is JVMD
- ii. Architecture
- iii. Installing JVMD Manager & Agent
- iv. Configuration overview
- v. JVMD usage overview



### ✓ JVM Diagnostics

- ✓ Enables administrators to diagnose performance problems in java application
- ✓ Directly in the production environment
- ✓ Eliminate the reproduction in a test environment
- ✓ Does not need a restart of the application
- ✓ Enterprise JavaBeans (EJB)
- ✓ Former name: AD4J in Grid Control 11G



### ✓ Key features

- ✓ Java activity monitoring and diagnostics with low overhead
- ✓ In-depth visibility of JVM activity
- ✓ Real time transaction tracing
- ✓ Cross-tier correlation with oracle databases
- ✓ Memory leak detection and analysis
- ✓ JVM pooling
- ✓ Real-time and historical diagnostics



- ✓ Supported Platforms and JVMs
  - ✓ all platforms on which the Oracle Management Service has been certified
  - ✓ certification information  
[ID 1415144.1]
- ✓ Licensing
  - ✓ Diagnostics Pack for Oracle Middleware
  - ✓ Management Pack Enterprise Edition
  - ✓ Management Pack for Non-Oracle Middleware
  - ✓ Application Management Suite for Oracle E-Business Suite
  - ✓ ....

### Agenda

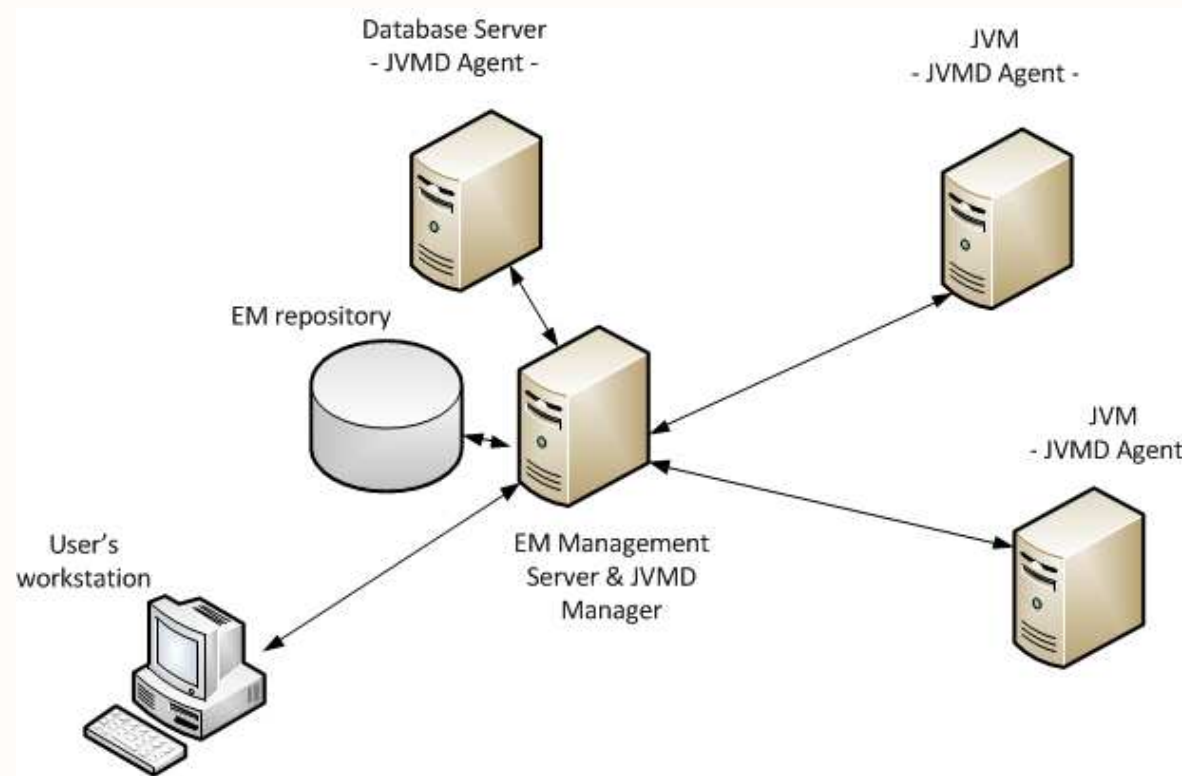
- i. What is JVMD
- ii. **Architecture**
- iii. Installing JVMD Manager & Agent
- iv. Configuration overview
- v. JVMD usage overview

# dbi services

## Architecture



- ✓ Integrated with Oracle Enterprise Manager Cloud Control





✓ CPU, RAM, Heap Size, and Hard Disk Space Requirements

	Small	Medium	Large
	(1 OMS, <1000 Targets, <100 Agents, <10 Concurrent User Sessions)	(2 OMSes, >=1000 but <10,000 Targets, >=100 but <1000 Agents, >=10 but <25 Concurrent User Sessions)	(> 2 OMSes, >=10,000 Targets, >=1000 Agents, >=25 but <=50 Concurrent User Sessions)
CPU Cores/Host (per OMS)	2	4	8
RAM with ADP , JVMD (per OMS)	8 GB	12 GB	20 GB
Hard Disk Space with ADP, JVMD (per OMS)	10 GB	12 GB	14 GB



### Agenda

- i. What is JVMD
- ii. Architecture
- iii. **Installing JVMD Manager & Agent**
- iv. Configuration overview
- v. JVMD usage overview



✓ *See video*

### Agenda

- i. What is JVMD
- ii. Architecture
- iii. Installing JVMD Manager & Agent
- iv. Configuration overview
- v. JVMD usage overview



✓ *See video*

### Agenda

- i. What is JVMD
- ii. Architecture
- iii. Installing JVMD Manager & Agent
- iv. Configuration overview
- v. **JVMD usage overview**



✓ *See video*



Gérard Wisson  
Senior Consultant

Mobile +41 79 819 25 98

[gerard.wisson@dbi-services.com](mailto:gerard.wisson@dbi-services.com)

[www.dbi-services.com](http://www.dbi-services.com)

---

„We look forward to working with you!“