

My Favorite Oracle SQL Developer Data Modeler Features

Jeff Smith
Oracle Corp
Cary, North Carolina, USA

Keywords:

SQL Developer, design, architect, model, ERD, diagram

Introduction

I am not a data modeler. I am definitely not an application architect. I know a few things about Oracle database design and best practices. And I could probably build you a decent data model. But that is not what this presentation is about.

If you DO want this type of information, then please go see Heli (from Finland!)

In this session, I aim to deliver at least two to three new techniques for each attendee that will dramatically affect how they use the tool. I want you so save time. I am a productivity freak, and I obsess over the little things in the tools that you probably use every day. I want to help you save time.

I have plenty of material to fill the allotted time, but everyone will have a much more enjoyable experience if they feel free to ask questions or even challenge the material being presented.

Each tip or trick is documented in more detail on my blog. I will provide those links below, and they are also included in the PowerPoint slide deck.

Most of the techniques will be demonstrated live on my laptop, running a 12.1.0.2 Oracle Database, although many of the tips are applicable to all users of Oracle.

In addition if a tip is dependent on a specific version of Oracle SQL Developer Data Modeler, I will specify said version.

A Few Tips

Search

Having all of your business and application logic defined in your models is of no value if you cannot also find this information easily and quickly. Data Modeler's search capability was greatly enhanced in the 3.3 release.

You can now quickly search any element of your design using the Quick Search toolbar in the upper right hand corner of the application.

For more control of the search depth and scope, you can use the Find dialog, which is activated with a standard Ctrl+F keyboard or by hitting the search (binoculars) button in the application toolbar.

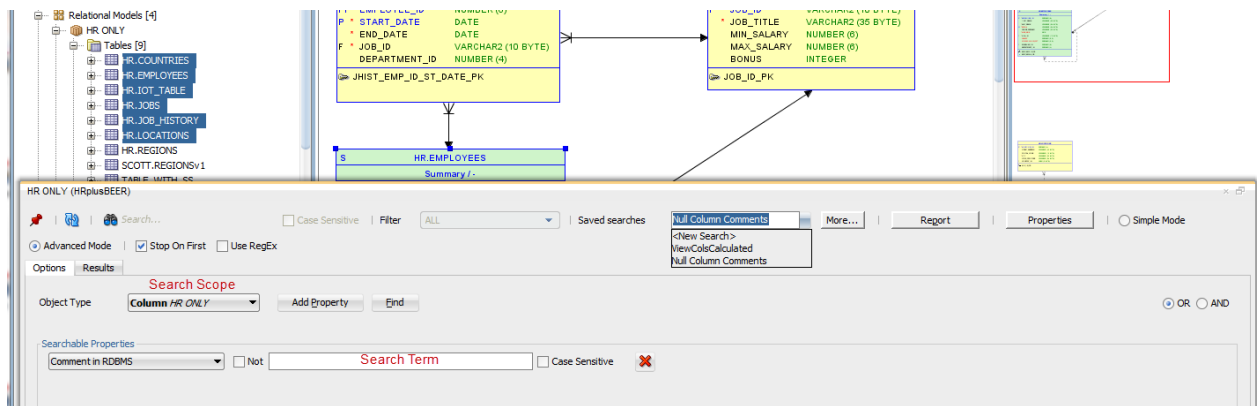


Illustration. 1: Advanced Search interface allows for multiple search terms and items

In addition, popular searches can be saved to be reused later. And of course, we support regular expression search terms.

SubViews

Your design may contain many dozens of entities or tables. This can make a model very hard to comprehend and also to work with. SubViews allows the designer to take one or more objects and put them in another separate space.

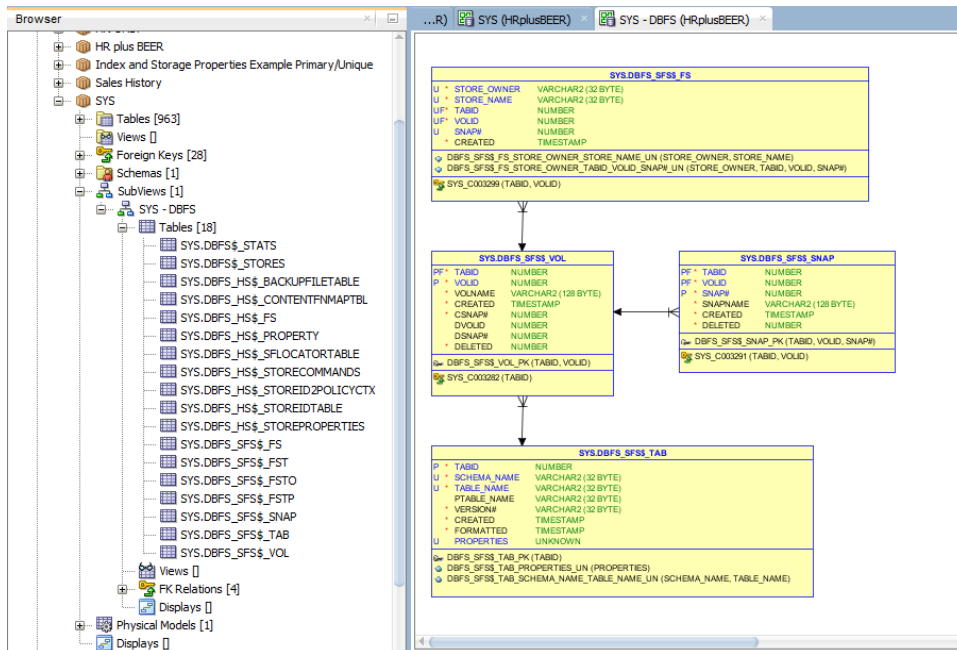


Illustration. 2: Instead of having all 1,000+ objects, I can select a few related ones and copy them to a new or existing SubView

SubViews are just an additional diagram and organizational structure for the model object. Making changes to a table or entity in a SubView will also change it in the main areas. You can remove an object from a SubView without removing it completely from your design.

SubViews can also be used to set a search and reporting scope for the Data Modeler. So instead of searching or creating a report on the entire design, you can concentrate on your SubView objects.

Displays

Displays allow you to have multiple graphical implementations of your diagrams. If you need to support multiple notation styles in a design, you can create one or more displays.

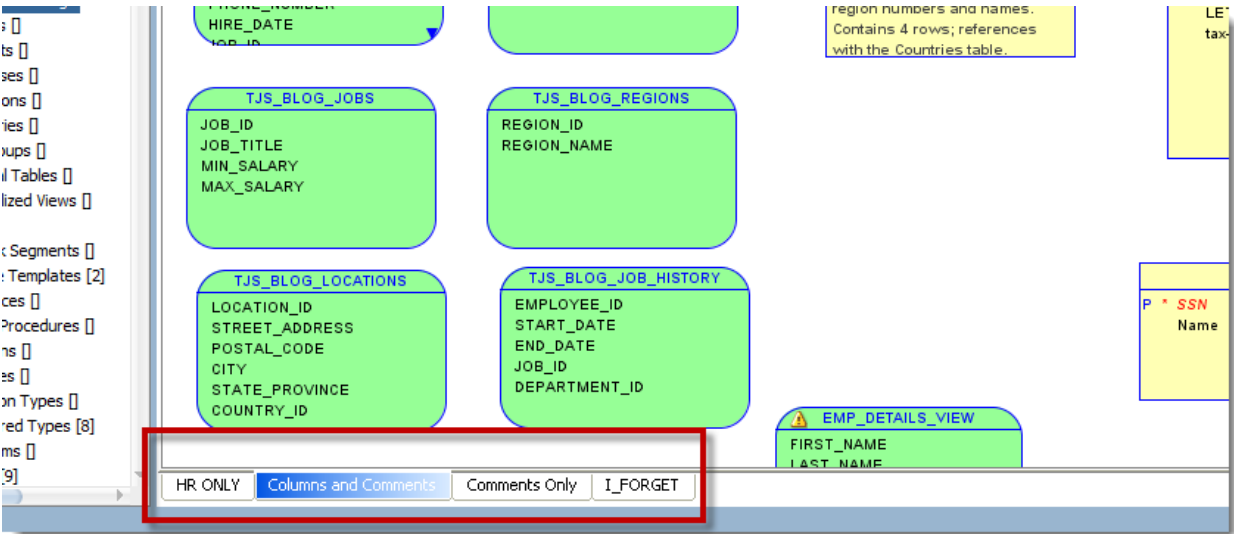


Illustration. 3: Displays allow you to change any visual component of the diagram without affecting the objects themselves.

Preferred Data Types

Oracle SQL Developer Data Modeler supports many dozens of data types when defining an attribute or column. But for most of us, we stick to a few 'favorite' or commonly used types.

Take a few moments in the preferences to define these, and you will save yourself a lot of time when defining your data types going forward.

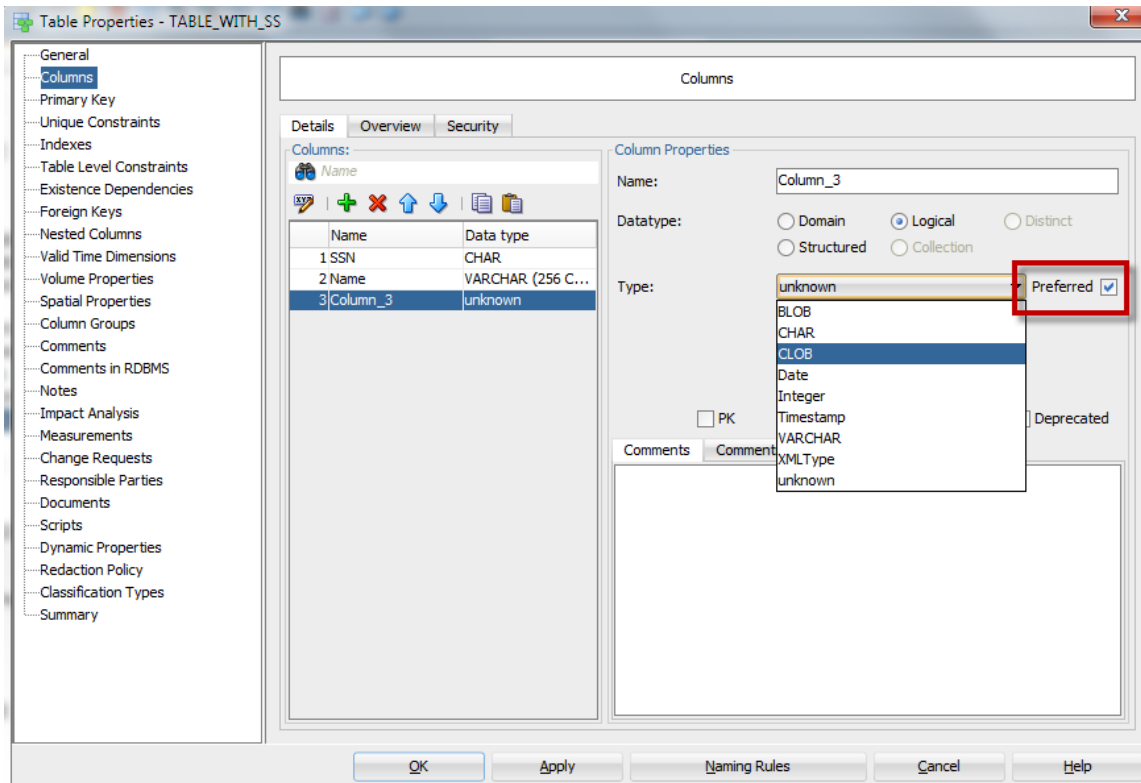


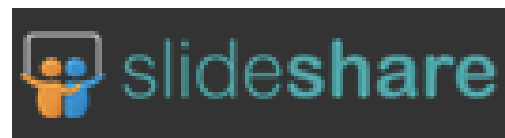
Illustration. 4: Setting the 'Preferred' checkbox will only show the data types you have marked as such in the preferences – much less information to scroll through when looking for VARCHAR!

Tips & Tricks Shown in this Presentation – In Blog Format

I have taken each technique and explained them in more detail on my blog. Here is a list for your enjoyment:

- [Search](#)
- [SubViews](#)
- [Displays](#)
- [Preferred Data Types](#)
- [Propogating Properties](#)
- [Query Builder for Defining/Testing Views](#)
- [Drag and Drop](#)
- [Transformations](#)
- [Navigator](#)
- [Design Collaboration via Excel](#)

You can also find this presentation on slideshare -



Thank you for your time and allowing me to present at your conference. Please feel free to contact me at any time for questions regarding our database development and design tools.

Contact address:

Jeff Smith

Oracle Corp

Cary, North Carolina, USA

Phone: +001 919-539-6646

Twitter: @thatjefsmith

Email jeff.d.smith@oracle.com

Internet: <http://www.thatjeffsmith.com>